

## LADIES NOTICES JULY 14<sup>TH</sup>

We had good weather today for the Lady President's Putter ('LPP'). Here are the results. We hope to do a presentation (outside most likely) next week.



June Houlston, Glenys Rainbow (Lady President) & Wendy Audsley about to tee-off for the Lady President's Putter Competition.

### Silver Division

1 <sup>st</sup>	Di Shepherd	32 points	£9
2 <sup>nd</sup>	Gillian Hanson	31 points	£8
3 <sup>rd</sup>	Linda Nicoll	30 points	£7 taken from
4 <sup>th</sup>	Christine Hutchings	30 points	£6 taken from Alison Sexton

### Bronze Division

1 <sup>st</sup>	Ruth Simpson	32 points	£9
2 <sup>nd</sup>	Denise vd Welle	30 points	£8
3 <sup>rd</sup>	Ann Hemmingway	27 points	£7
4 <sup>th</sup>	Wendy Audsley	26 points	£6

Winner of the 9 hole competition was Gwen Treadwell with 11 points

A special mention to Ilze who scored 38 points today, but was sadly DQ as she didn't write her name on her card. Some of you will have seen her score on HDID. Anyway well done Ilze for a great score.

## **SATURDAY 17<sup>TH</sup> EG MEDAL**

Please remember to pay in the shop if you have told Tracie you are playing.

## **TUESDAY 20<sup>th</sup> EG MEDAL AND DRAW**

Following on from our Committee meeting on Tuesday 13<sup>th</sup>, we have decided on the following course of action for July and August.

We are going back to having our draws in person from next week. This is part of how our Club has always worked. Ladies can turn up without having committed beforehand and get to play with other ladies in their division. The draw is random.

However, we are aware that just because we have been “freed” by Boris does not mean we should not adopt a cautious approach. So...

### **Instructions**

1. Please register and pay in the shop and get your card
2. The weather forecast looks ok next week, so Sue Cooper and Gill Taverner are going to do the draw outside the Club House.
3. If you are in **Silver** please get to the Club for a draw at **10.20 am**
4. If you are in **Bronze** please get to the Club for a draw at **10.40 am**
5. 9 hole ladies you will be playing off 10<sup>th</sup> tee. DO NOT come before 11 am and do the draw among yourselves as you used to do.

As we are now back to doing draws, I need a rota of volunteers to undertake the draw. I have put a rota sign-up sheet in the Changing rooms on the Noticeboard. Please do sign up. There will be instructions as to how to do the draw with the sign up, (page 68 of the handbook too), so don't worry if you have not done it before. Best to sign up with a friend as you will be at the back of the field in a 2 ball, although sometimes you will get let through if you are very speedy.

## **SATURDAY 24<sup>TH</sup> JULY – THE HUDSON TROPHY – LADIES CLUB CHAMPIONSHIP**

The sign up will close on Friday 16<sup>th</sup> July. It is a 36 hole competition. You will go out in 3s in handicap order highest to lowest. I will send the tee times once the list has closed. There will be a sandwich list in the changing rooms, so you can pre-order food at lunch. We will have a drink at the end and do a trophy presentation, outside if possible. There are vouchers for the winner and runner up gross, but there are also nett prizes too for the winner and runner up.

## **TUESDAY 27<sup>th</sup> JULY – PHYL TEARLE TROPHY**

We decided to run the Phyl Tearle as it is a trophy competition. We need volunteers to do the draw for this. See the sign up sheet for the draw rota upstairs in the changing room.

If some of you can remember, we usually run the Phyl Tearle in March and it is the one where the bronze ladies usually go first in 2s and the Silvers in 3s. Since we have just started doing the draw again, we don't want to mess around with things at this stage, so just for this **year**, the Phyl Tearle will run as a draw exactly as on Tuesday the 20<sup>th</sup>. Same timings i.e. 10.20 for silver, 10.40 for bronze, all in 3s.

Alternative day ladies can play on the preceding Saturday except those already playing in the Ladies Club Championship.

## **SATURDAY 31<sup>ST</sup> JULY**

Mens' club championships course closed , BUT..

## **SUNDAY 1<sup>ST</sup> AUGUST**

Mixed Helen Hill. Please try and sign up, especially if you didn't get your usual game on Saturday.

## **TUESDAY 3<sup>RD</sup> AUGUST Lady Captain's Away Day at East Herts Golf Club**

Many thanks to all those ladies who have signed up. It should be a fun day out. The list will come down on Saturday 24<sup>th</sup> July. Coffee and biscuits to start. First tee time 10.00 am. It will be a fun competition with a mixed alliance, i.e. high, medium, low handicap teams. I am visiting on 21<sup>st</sup> of July, but I have been reliably informed that the changing rooms are quite small, so I suggest we just change shoes and tops if you would like to and the whole day is kept quite casual. I imagine we will be eating 3.30 ish so it will not be a late day. Please do put any dietary requirements down when you sign up. The cost is £55 for the day. Please can you make sure you pay the Ladies Section before the actual day.

[Lady Captain's Away Day Sign Up Sheet \(Click\)](#)

## **SATURDAY 7<sup>TH</sup> AUGUST**

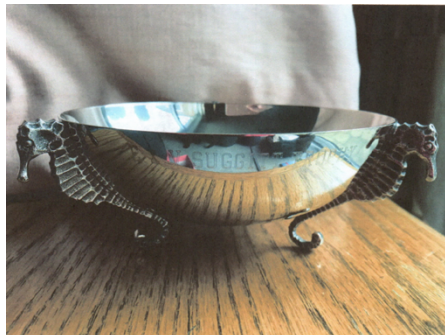
There is a Texas Scramble. Ladies can sign up for this.

**SUNDAY 8<sup>TH</sup> AUGUST AND TUESDAY 10<sup>TH</sup> AUGUST LADIES EG MEDAL, JUBILEE CUP AND FOR THE TUESDAY LADIES THE BURLEY TROPHY DRAW**

**SATURDAY 14<sup>TH</sup> AUGUST BUSINESS LADIES QUALIFYING STABLEFORD**

Please let Tracie know if you are playing as it is bookable tees that day and don't forget to register in the shop and pay £2 competition fees.

**TUESDAY 17<sup>TH</sup> AUGUST E & V SUGGITT BOWL**



Format 4BBB.  
Sign up will be in the Changing Rooms.  
Draw for partners will be done on Tuesday 10<sup>th</sup> August.

**SATURDAY 21<sup>ST</sup> AUGUST**

New Men's Captain's Day Date

**TUESDAY 24<sup>TH</sup> AUGUST**

Qualifying Stableford in conjunction with Business Ladies Q Stableford on Saturday 14<sup>th</sup> August.

**SATURDAY 28<sup>TH</sup> AUGUST AND TUESDAY 31<sup>ST</sup> AUGUST**



Rosemary Carroll Sign Up. Greensome Stableford

## **LADIES FRIENDLIES**

There are four remaining fixtures this year. The matches are a 4BBB friendly format. If you would like to play in any of the remaining matches, please update your availability on the link below or email Sue Cooper directly at mincooperuk@yahoo.com

[Ladies Friendlies Availability Sign Up \(Click\)](#)

I think that is probably enough for everyone to digest today. Please note the diary changes. We have tried to include as many trophies as we can this year and are trying to match Tuesdays and Saturdays when possible. Obviously there have been unavoidable diary changes and there may still be.....